



# REUSABLE CONSTRUCTION ENTRANCE


## Engineering Data Sheet

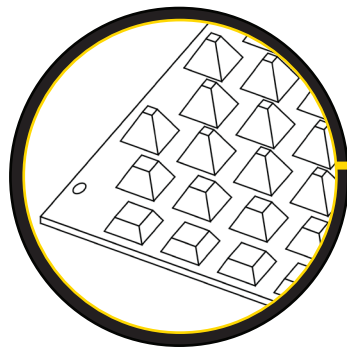
### FODS TCM MODEL #1100 APPLICATION

The FODS Composite trackout control system is designed to be used as a temporary construction entrance that provides site access while minimizing sediment leaving the site. The top surface of the construction entrance mat is covered with pyramids that dislodge and collect mud. The mats are unidirectional and are meant to have the tapered and staggered pyramids in the direction of travel. Individual mats are connected together with hardware to form various configurations to fit your jobsite.

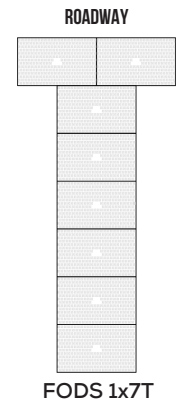
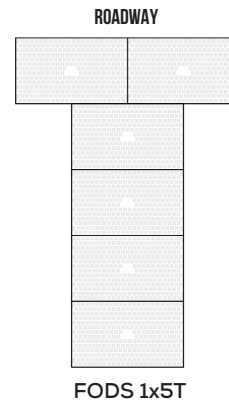
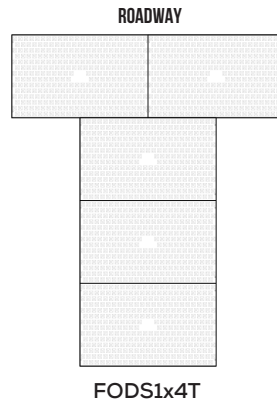
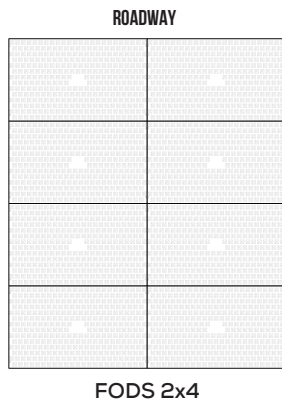
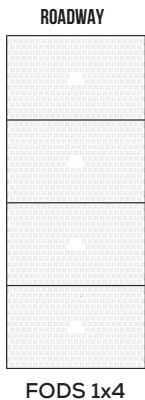
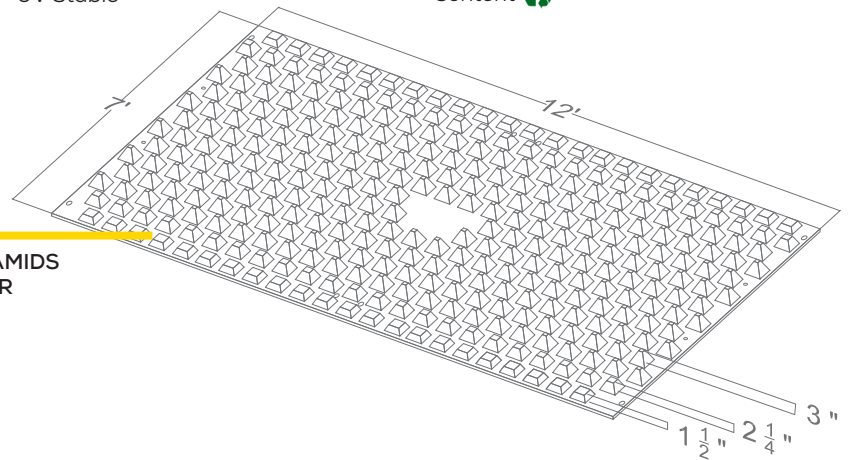


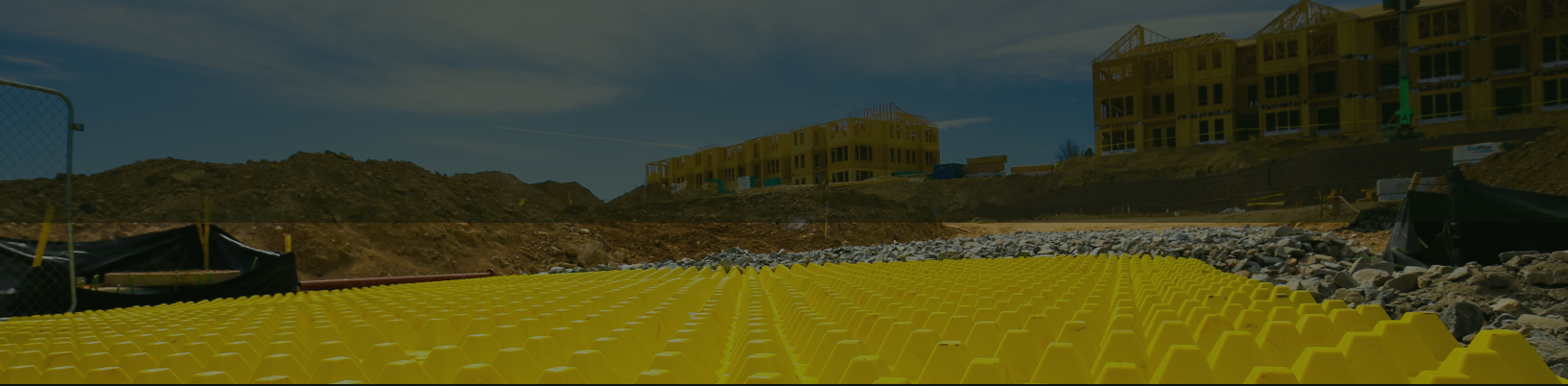
### FEATURES

- Reusable
- Increased Effectiveness at Reducing Site Trackout
- Extreme Durability
- Crush Rating of 20,000 lbs Per Pyramid
- Compression Molded HDPE
- Highly Visible
- UV Stable
- Easy and Efficient to Transport
- Mat Size: 12'(w) x 7' (l) x 3 3/4" (t) (3" Pyramid Height)
- 3 Year Manufacture Warranty
  - Certification and Compliance
  - US Patent #US 8,061,927 B1
  - CalTrans TC-1 - Alternative BMP
- 10% Post-Consumer Recycled Content 

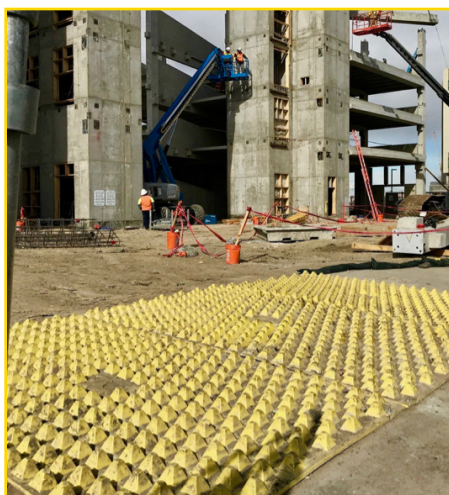


TAPERED PYRAMIDS FOR SMOOTHER TRANSITION





# FODS Reusable Construction Entrance - Engineering Data Sheet



## SUITABLE INSTALLATION SUBSTRATE

- Un-Excavated Soil
- Excavated Soil (Min CBR: 4)
- Asphalt
- Concrete
- Rock
- Any Existing Project Substrate

FODS Trackout Control System should be installed near the site exit point, as close to the location where vehicles enter the roadway as safely as possible. FODS mats should not be installed at a low point on the site where water will pool.



## FODS ANCHORING SYSTEMS

- Form-Stakes (18" or 24")
- Concrete Sleeve Anchor (Asphalt and Concrete)
- Suitable Anchor for Substrate

## CLEANING / MAINTENANCE

Mats should be cleaned once 2.5" of sediment has built up in the lane of travel.

- Skid-Steer Broom Attachment (enclosed broom for dust control)
- FODS Shovel
- Street Sweeper (requires adjustable bristle head)
- Pressure Washer (must have ability to contain water)
- Water Truck (must have ability to contain water)

## WARNINGS

- Caution is to be used when crossing mats with metal tracked equipment.
- Equipment with aggressive metal tracks should not cross mats.
- Do not drag metal equipment across mats.
- Do not use mats for bridging.

**\*\*\*Before using earth anchors, call 811 for locates to mark underground utilities\*\*\***



**Know what's below.  
Call before you dig.**