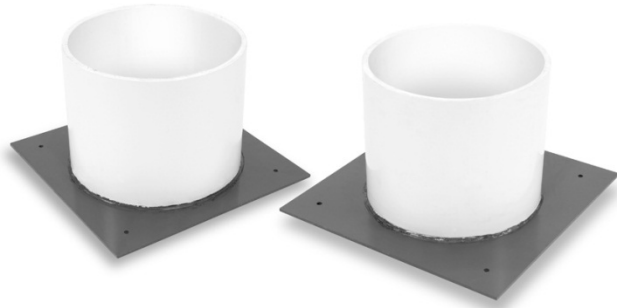


Product: Influent/Effluent Ports



StormTank™ is designed with the understanding that getting the runoff into and out of the system is as important as the system itself. To provide easy connection to your drainage system, Brentwood manufactures two PVC influent / effluent ports; a 12" (305 mm) port and a 14" (356 mm) port, respectfully.

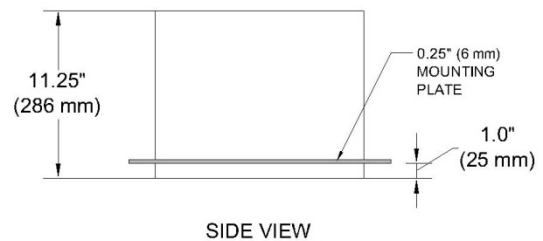
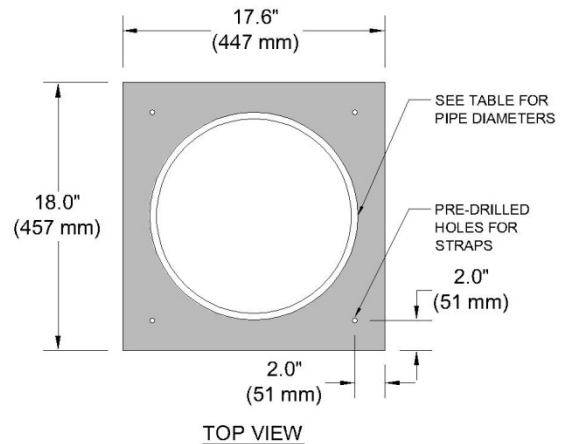
The ports utilize a slip joint to limit the potential impact of pipe movement, and require inlet pipes to be smaller diameter and outlet pipes to be larger diameter, than the port pipe. Inlet and outlet connections are both wrapped in a layer of geotextile fabric to prevent stone and soil migration.

Technical Data

Nominal Specifications

Model	Pipe Diameter OD	Plate Dimensions	Weight
IEP-12	12.75" (324 mm)	18"x17.6"x0.25" (457x447x6 mm)	12.5 lbs. (5.7 kg)
IEP-14	14.0" (356 mm)	18"x17.6"x0.25" (457x447x6 mm)	14.5 lbs. (6.6 kg)

- All inlet/outlet ports are to be connected to the drainage pipe by a slip joint connection. Reference Brentwood Industries Standard Drawings for specific information.



Manufacturer:



Distributed by:
 R. H. Moore & Associates, Inc.
 (O): 813-988-0200 (F): 813-985-4533
 info@rhmooreassociates.com
 www.rhmooreassociates.com

Disclaimer: Brentwood Industries (Brentwood) assumes no liability for the accuracy or completeness of this information or for the ultimate use by the purchaser. Brentwood Industries disclaims any and all other warranties, expressed or implied with respect to any service or deliverable other than those expressly provided in this (section, paragraph, quotation, proposal, etc.) including without limitation any implied warranty of merchantability or fitness for a particular purpose. This document should not be construed as engineering advice.