



JOB SITE TOOLS RECOMMENDED

- **TOOTHLESS BUCKET**
- **RIGGING CHAINS**
- **SHACKLES AND STRAPS**
- **SEED, SOD**
- **PROTECT TRANSITIONS**
- **T – HANDLE HOOKS**
- **SEAM UNDERLAYMENT**
- **ANCHORS**

When unloading or transporting rolls on a jobsite, a basket hitch method is best for the Flexamat rolls. The orange lifting straps included are only rated for unloading. To properly unload you should have a screw pin anchor shackle clevis, a three leg bridle sling with safety latches. Transporting the rolls a long distance will require to have appropriately rated straps for the weight of each roll or another transporting method. Installation recommendations include using a toothless bucket to unroll the Flexamat, landscaping tools, proper seed mix or sod and anchors for combining multiple rolls.

TOOTHLESS OR SMOOTH BUCKETS



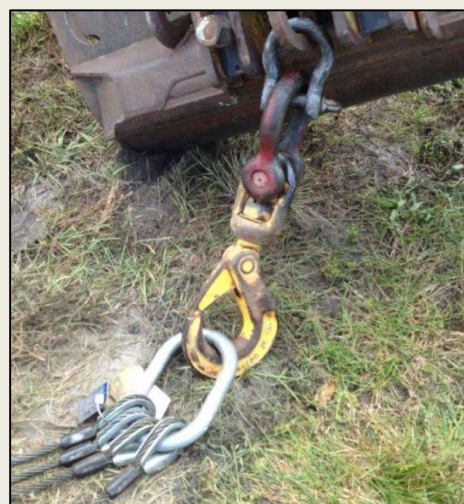
Distributed by:

R. H. Moore & Associates, Inc.

800-330-2333 | info@rhmooreassociates.com

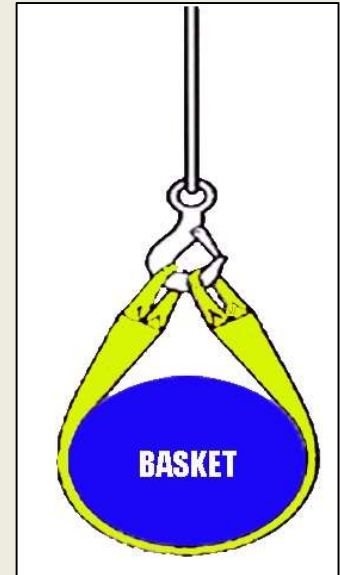
www.rhmooreassociates.com

RIGGING CHAINS AND SHACKLES



SHACKLES AND STRAPS

4', 5.5', 8', 10'
ROLLS
COME
WITH
TWO
STRAPS



12' & 16'
ROLLS
COME
WITH
THREE
STRAPS



Extra shackles
to support
lifting straps

TRANSPORTING ROLLS



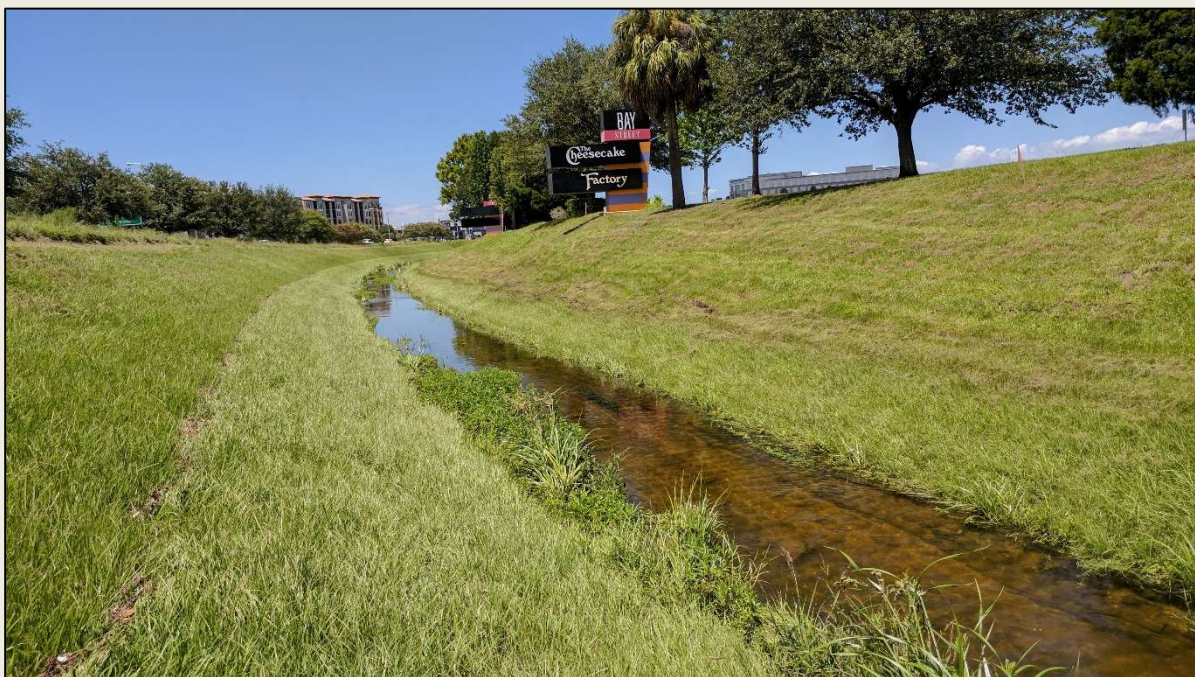
SEED AND PREPARATION

Common Name	Botanical Name	Class/Type	Rate/Acre	Planting Zone	Planting Dates
Common Bermuda Grass (Hulled)	<i>Cynodon dactylon</i>	Required Permanent Grass	10 (11)	1	April 16 – August 31
Common Bermuda Grass (Unhulled)			10 (11)		
Common Bermuda Grass (Hulled)	<i>Cynodon dactylon</i>	Required Permanent Grass	10 (11)	2,3,4	April 1 – October 15
Common Bermuda Grass (Unhulled)			10 (11)		
Bahaia Grass	<i>Paspalum motatum</i>		10 (11)		
Rye Grass, Millet, Cereal Grass (Oats)	<i>Lolium penne</i> spsp. <i>Multiflorum</i> , <i>Echinochloa cursgalli</i> , <i>Avena sativa</i>	Temporary Grass	50 (56)	1	September 1- April 15
Rye Grass, Millet, Cereal Grass (Oats)	<i>Lolium penne</i> spsp. <i>Multiflorum</i> , <i>Echinochloa cursgalli</i> , <i>Avena sativa</i>	Temporary Grass	50 (56)	2,3,4	October 16- March 31

KNOW YOUR SEEDING ZONES



POOR SOILS OR SHORT
GROWING SEASON – USE SOD



COVER EXPOSED SOILS AND PROTECT ALL
SURROUNDING TRANSITION EDGES



CURLEX EROSION BLANKETS



GROUTING TRANSITIONS

PULLING AND CUTTING TOOLS



Stand up Pulling Hook



Machete and Small Hook



Cut Saw for Longer Cuts

SEAM UNDERLAYMENT

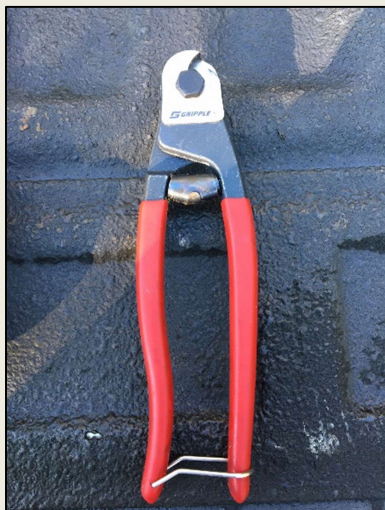
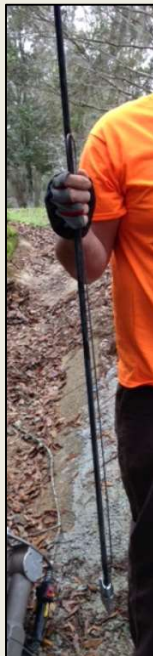
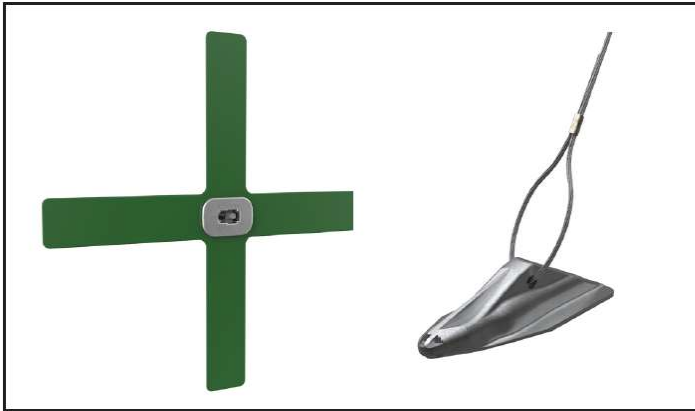


2.5' TRM Roll Width Seam



2.5' Curlex Roll Width Seam

GRIPPLE ANCHORS & TOOLS



GRIPPLE LOCK PRECISION PULLING



Center Jack Jaw Over Lock



Not Centered!!

REBAR ANCHORS & TOOLS



#3 Rebar, with 3" Gap, and 18" Legs



20" Stainless Steel Zip Ties